

# Roof Guard

## Seamless, Joint Free, Elastomeric Waterproofing Membrane

### Description

ROOFGUARD is an elastomeric, single pack roofing compound based on special acrylic co-polymers. It is ideal for dry substrate where it forms a seamless, joint free, water and weather tight elastic membrane.

### Uses

It is suitable for application over concrete, wood or asphalt roofs. Excellent protection for pipelines, grain elevators, etc. Will waterproof existing asphalt roofs which are badly weathered, cracked and leaking.

### Features

- Resistant to aging & UV radiation.
- Accepts light foot traffic.
- Withstands temperatures from -5°C to +100°C.
- Ease of application.
- Non-toxic & non-hazardous.
- Non-flammable as a liquid compound.

### Colours

White, Grey; Others available on request.

### Packaging

4.5 kgs., 18 kgs. & 200 kgs. Metal pails.

### Installation

- ROOFGUARD may be applied by brush, roller, squeegee or spray equipment. The actual method of application depends on site conditions.
- To spray, a nozzle size of at least 0.028 inch is required together with a suitable spray equipment.
- All surfaces to be coated must be clean, dry and free from dust, dirt, oil, grease and other contaminants.
- Apply in separate coats each at a right angle to the one before. Using a different colour for each coat helps ensure consistency of cover.

### Surface Preparation

- Concrete and cementitious substrates must be well compacted with a wood float type finish, be at least 28 days old and well dried.
- Wooden or metal panels to be firmly fixed in position.
- TERRAZZO ROOF TILES:

Clean and repair damaged joints. Remove all loose material.

- METAL ROOFS: Wire brush to remove moss, mildew and loose paint. Derust corroded areas, then clean surfaces with a broom before priming.

### Priming

- OLD ASPHALT SURFACES AND BITUMINOUS ROOFING FELT: Cut felt blisters cross wise, dry and rebond with suitable adhesive. Then prime cleaned surface with ROOFGUARD diluted with 20% water.
- CONCRETE & TERRAZZO TILE ROOFS: Prime with ROOFGUARD diluted with 20% water.
- METAL ROOFS: Clean and remove all rust and apply a rust inhibitive primer. Follow this by applying metal primer to all corroded surfaces.
- OTHER ROOFS: Should the roof be affected by algae or fungal growth, use a stiff bristled broom to remove this, before treating the cleaned surface with a suitable fungicide, and apply primer coat by diluting ROOFGUARD with 20% water.

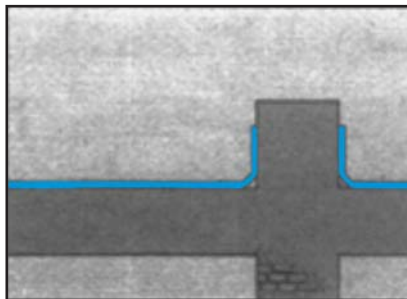
### Technical Data

Solid Content. %	: 62(+/-1) ASTMD 1076	ASTMD 1076
Tensile Strength. N/CM	: 2900	ASTMD 412
Elongation at break. %	: 400	ASTMD 412
Hardness shore A	: 68	ASTMD 2240
Peel Adhesion. Lbs/In	: 65	ASTMD 297
Viscosity. CPS	: 50,000-70,00	Brook field
Service temperature. OC	: Aprox. -5 to +100 In-house test	In-house test
Flexibility	: No cracking of film when aged over 10 years weathering conditions	In-house test
UV Resistance	: 10,000hrs., No Deterioration, no colour fade	ASTMD 822

# A membrane that comes in a can

## Application

- Primer must be completely dry.
- Stir well ROOFGUARD before use and apply by soft brush, roller or spray gun.
- For spraying ROOFGUARD may be slightly diluted with water. Too great a dilution may lead to sedimentation and blocking of spray gun.
- Apply two coats, each at the approximate rate of 0.5 kg to 1 kg/M<sup>2</sup>, depending upon the site requirement.
- Where substantial movement is anticipated in the substructure, reinforce ROOFGUARD by incorporating a non-woven polyester scrim as part of a "Sandwich" membrane system. Lay this mesh in the wet first coat before application of subsequent coats.
- All detailing to pipes, upstands, drains, projected line etc. should be reinforced in this way

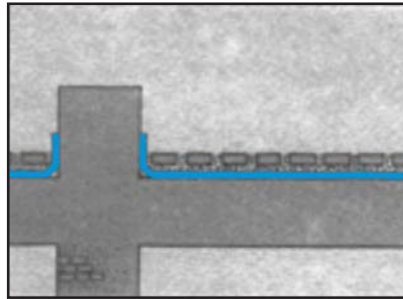


## Curing

Allow 24 hours between coats. A final curing time of 48 hours is adequate at normal working temperatures. Ensure curing is complete before laying coverings. Low temperatures and high atmospheric humidity will slow down the curing rate, and vice versa.

## Mechanical Protection

ACCESSIBLE ROOFS can be protected by insitu concrete screed. Place a non woven polyester separation layer or any other suitable protection layer



over the waterproofing membrane followed by insulation boards (If required) and place the topping screed of 4 cm to 5 cm thickness or suitable cement tiles.

## Storage

- Keep away from direct sunlight and preferably store below 30° C and above +5° C. Protect from frost.
- When stored in unopened containers, expect a minimum shelf life of one year.

## Technical Assistance

- Bitumen or asphalt roof surfaces should be thoroughly dry.
- Never apply if rain is imminent.
- Application of thick coat at temperature below +5° C may result in incomplete film formation with reduced elasticity and the possibility of crack forming.
- ROOFGUARD is resistant to light foot traffic, however, heavy traffic, high heel shoes, furniture etc. will cause damage. In these cases the membrane should be protected by tiles, slabs etc.
- To check the thickness of each coat, two different



colours of ROOFGUARD should be used.

- Concrete and Mortar shall be at least one month old.
- Do not use ROOFGUARD on areas that will be constantly submerged in water.

## Health & Safety

- TOXICITY: non toxic and odourless.
- CLEANING: Remove with water when wet and appropriate hand cleaner when dry.

## Product Warranty

All products proven to be defective in manufacture will be replaced at no charge. Since the use of these products is beyond our control we cannot accept damage in excess of the purchase price of these products.